



# INFORMATION HANDBOOK

SPRING 2020-2021



**Eastern Mediterranean University**

# Contents

---

1	Welcome .....	4
1.1	Rector's Message .....	4
1.2	Covid 19 Info .....	5
2	Academic Calendar / Opportunities Offered to EMU Students.....	6-8
2.1	The Hidden Secret.....	9
2.2	At a Glance .....	9
2.3	Places to Visit.....	9
3	Living in North Cyprus .....	10-11
3.1	Immigration Information ( <i>Residence Permit</i> ) .....	10
3.2	Disciplinary Actions .....	10
3.3	Accommodation .....	11
3.4	Living Expenses .....	11
3.5	Transportation .....	11
3.6	Student Services Fund .....	11
4	Campus Events .....	12
4.1	Student Clubs .....	12
4.2	International Events .....	12
5	Student Services Office .....	13
5.1	Student Services Office .....	13
5.2	Campus Card .....	13
5.3	Crisis Management .....	13
5.4	Apostille Approval Procedures .....	13
5.5	Embassy Procedures For International Students .....	13
5.6	Call Center .....	13
5.7	Immigration Procedure ( <i>Residence Permit</i> ) .....	13-14
6	Academic Issues .....	15
6.1	Registration .....	15

---

---

6.2	Academic Advising.....	15
6.3	Class Attendance.....	15
6.4	Grade Calculation (CGPA - GPA).....	15
7	Facilities and Services.....	16-17-18
7.1	Identification Cards (Campus Cards).....	16
7.2	Health Center.....	16
7.3	Psychological Support.....	16
7.4	Alumni Communication and Career Research Directorate (MIKA).....	16
7.5	Canteens and Cafeterias.....	16
7.6	Bank Services.....	17
7.7	Registrar's Office.....	17
7.8	International Office.....	17
7.9	Social and Cultural Activities Unit.....	17
7.10	Library Programs.....	17
7.11	Post Office.....	17
7.12	Lala Mustafa Paşa Sports Complex.....	17
7.13	Off Campus Facilities.....	18
8	English Language Requirements.....	19-20
9	Online Application.....	21
10	Map of Campus.....	22-23
11	Bus Schedule.....	24
12	Accommodation.....	25-27
13	Cyprus Map.....	28-29

---



*Dear Student,*

*Education has been a part of your life from the day you were born. Each individual is unique and, there are many characteristics and skills that make you who you are. The key point is to bring out such characteristics and skills.*

*In the new world order, technology has improved, the ways of reaching information have changed, new occupations has come to light, and the value of art, sports, self-improvement and cultural interactions has started to be appreciated more. Within this respect, the needs and expectations have also changed in parallel to the changes in societies. You will be shaping your future in accordance with such changes in life.*

*Today, you are at an important cornerstone in your lives. The decision you are about to make will act as a significant means on your journey towards reaching your goals in life. You should feel that you are getting closer to your goals in every step you take. It is of great importance for you to find an occupation that unveils the characteristics which make you who you are, that you feel happy while doing it, that enables you to make your wishes come true and lastly, that you feel you are at your best. You should benefit from the opportunities offered to you by getting good quality education, being familiar with the necessities of multi-cultural systems, being engaged in activities which are to play an important role in your personal development, being interested in arts and sports, making new friends in a multinational environment and setting off for new horizons.*

*Eastern Mediterranean University is the first state university in the Turkish Republic of Northern Cyprus (TRNC). With its excellent infrastructure, qualified academic staff, English and Turkish medium programs, student exchange programs and, various sports, social and cultural events, EMU offers you a huge opportunity for your career planning. EMU has a multicultural and international structure with a student population from 110 different countries. We are a university that closely follows the success of its graduates equipped with its internationally recognized and valuable diploma. We work with young people who are creative, productive, have analytical thinking skills, are entrepreneurs, keep up with the expectations and competitive conditions of the global system and develop themselves in different fields.*

*Attaching great importance on international accreditations, our university has been awarded important accreditations for most of its programs. EMU offers its students the opportunity to prepare for the future in all aspects, with extensive sports facilities, student clubs, international student associations, research centers, EMU Beach Club and, different dormitory and accommodation opportunities.*

*We would be extremely pleased to have you as a member of this prestigious institution that offers educational opportunities in an international environment, improves your individual characteristics, and provides training in a quality academic environment.*

**Prof. Dr. Aykut HOCANIN**  
*Rector*

## Covid 19 Information

### Dear Freshies, Welcome to Eastern Mediterranean University!

The global Covid-19 pandemic affecting the entire world has also significantly affected the field of higher education. In relation to the manner, we would like to inform you that, Welcoming and Placement will be carried out in line with the Covid-19 measures specified by the TRNC Council of Ministers. Updated information about entering and exiting the TRNC and, the form of education that will be provided during this pandemic is available on the Eastern Mediterranean University's website <https://www.emu.edu.tr/en>.

Online education will be offered to those who will not be able to join us on campus due to the Pandemic. Please follow the university's website in order not to miss any further announcement regarding the updates.

Welcome to EMU!

Best regards

### Important Telephone Numbers:

- Eastern Mediterranean University (Operator)	(0392) 630 1111
- Security Office	(0392) 630 1444
- Dormitories	(0392) 630 1328
- Registrar's Office	(0392) 630 1217
- Health Center	(0392) 630 2200
- Student Services Office	(0392) 630 2950
- Social and Cultural Activities Directorate/International Office	(0392) 630 1612-3049

## 2020 - 2021 Academic Calendar

Eastern  
Mediterranean  
University



### FALL Semester

September	01	2020	Online Course Registration For Fall Term 2020-2021 Commences
September	04	2020	Summer School Last Day Of Classes
September	07-09	2020	Summer School Final Exams
September	10	2020	Last day for the Application to change 2019-2020 Spring Term Letter Grades to CS / CU system
September	11	2020	Last Day For The Submission of Summer School Grades To The Registrar
September	14	2020	Application to change 2019-2020 Summer Term Letter Grades to CS / CU system commences
September	15	2020	Last Day For Submission of Summer School Graduation Decisions To The Registrar
September	23	2020	Diploma Awarding To Summer School Graduates
September	28	2020	Last Day For; Changing Summer Term 'Incomplete' Grades - Submission Of Grade Changes and Submission Of Graduation Make-Up Grades To The Registrar
Setember October	28-09	2020	Orientation Days For New Students
October	02	2020	Last Day for Application to change 2019-2020 Summer Term Grades to CS / CU system
October	05	2020	English Proficiency Test 1st Stage
October	06	2020	English Proficiency Test 2nd Stage*
October	07	2020	Announcement of English Proficiency Test 2nd Stage Results Last Day For Online Course Registration
October	08-09	2020	Course Registration Period (With Advisor) and Course Confirmation Days
October	12	2020	Classes Commence First Day Of Late Registration (With Penalty)
October	19	2020	Last Day For Late Registration
October	26	2020	Last Day For Add/Drop
October	27	2020	Academic Year Opening Ceremony
October	29	2020	TR Republic Day (National Holiday) / Religious Day (Mawlid Oct.28 night)
November	10	2020	Commemoration of Atatürk
November	15	2020	TRNC Republic Day (National Holiday)
November	30	2020	System Will Be Accessible For Entering Courses To Be Offered In Spring Term 2020-21
November- December	30-12	2020	Mid-Term Exams Period
December	25	2020	Last Day For Entering Courses To Be Offered In Spring Term 2020-21 Noel**
December	29	2020	Last Day For Course Withdrawal Last Day For Applying To Get Leave Of Absence
January	1	2021	New Year's Day
January	19	2021	Last Day of Classes
January	21	2021	Last Day For The Submission Of Grades To The Registrar
January- February	23-05	2021	Final Exams
February	10	2021	Fall Term Graduate Graduation Ceremony
February	11	2021	Last Day For Submission Of The Graduation Decisions To The Registrar
February	10-12	2021	Online Application Period For Resit Examinations
February	15	2021	Fall Term Graduate Graduation Ceremony
February	16	2021	Fall Term Associate / Undergraduate Graduation Ceremony

### SPRING Semester

February	15-28	2021	Orientation Days For New Students
February	17-23	2021	Resit Examinations
February	24	2021	Last Day For The Submission of Resit Examination Grades To The Registrar
February	25	2021	English Proficiency Test 2nd Stage*
February	26	2021	Announcement of English Proficiency Test 2nd Stage Results
February	28	2021	Last Day For Online Course Registration
March	01-02	2021	Course Registration Period (With Advisor) and Course Confirmation Days
March	03	2021	Classes Commence First Day Of Late Registration (With Penalty)
March	10	2021	Last Day For Late Registration
March	11	2021	Last Day For Changing 2020-21 Fall Term 'Incomplete' Grades, Letter Grade Changes, Submission Of Graduation Make-Up Grades To The Registrar
March	12	2021	Last Day For Submission Of 2020-21 Fall Term Graduation Make-Up and Resit Exams Graduation Decisions To The Registrar



March	12	2021	Last Day For Submission Of Graduation Make-Up and Resit Exams Graduation Decisions To The Registrar
March	17	2021	Graduation for 2020-2021 Fall Graduation Make-Up and Resit Exams Graduates Last Day For Add / Drop
April	23	2021	National Sovereignty & Children's Day
April	24-08	2021	Mid-Term Exams Period
May	01	2021	Workers' and Spring Day
May	10	2021	System Will Be Accessible For Entering Courses To Be Offered In Summer 2020-21
May	12	2021	Ramadan Bairam Eve
May	13-15	2021	Ramadan Bairam
May	19-22	2021	Spring Festival
May	24	2021	Last Day For Course Withdrawal Last Day For Applying To Get Leave Of Absence
May	28	2021	Last Day For Entering Courses To Be Offered In Summer 2020-21
June	10	2021	Last Day Of Classes
June	18	2021	Online Course Registration For Summer 2020-21 Commences
June	14-26	2021	Final Examinations Period
July	01	2021	Atatürk Commemoration, Youth and Sports Day
July	02	2021	Last Day For Submission Of The Graduation Decisions To The Registrar
July	07	2021	Online Application Period For Resit Examinations
July	08	2021	Spring Term Graduate Graduation Ceremony

#### SUMMER SCHOOL

July	12-17	2021	Spring Term Resit Examinations
July	19	2021	Kurban Bairam Eve
July	20	2021	Peace and Freedom Day
July	20-23	2021	Kurban Bairam
July	25	2021	Last Day For Online Course Registration
July	26	2021	Last Day For The Submission of Resit Examination Grades To The Registrar System Will Be Accessible For Entering Courses To Be Offered In Fall Term 2021-22
July	26-27	2021	Course Registration Period (With Advisor) and Course Confirmation Days
July	28	2021	Classes Commence First Day Of Late Registration (With Penalty)
August	01	2021	National Holiday
August	02	2021	Last Day for Late Registration
August	06	2021	Last Day For Submission Of Graduation Make-Up Grades To The Registrar Last Day For Changing 2020-21 Spring Term 'Incomplete' Grades
August	09	2021	Last Day For Submission Of Graduation Make-Up and Resit Exams Graduation Decisions To The Registrar
August	11	2021	Graduation for Spring Graduation Make-Up and Resit Exams Graduates
August	13	2021	Last Day For Entering Courses To Be Offered In Fall Term 2021-22
August	23	2021	Online Course Registration For Fall Term 2021-22 Commences
August	27	2021	Last Day for Course Withdrawal
August	30	2021	Victory Day
September	03	2021	Last Day Of Classes
September	06-09	2021	Final Exams Period
September	13	2021	Last Day For The Submission of Summer School Grades To The Registrar
September	17	2021	Last Day For Submission Of The Graduation Decisions To The Registrar
September	21	2021	Diploma Awarding To Summer School Graduates
September	30	2021	Last Day For Changing Summer Term 'Incomplete' Grades, Letter Grade Changes. Submission Of Graduation Make-Up Grades To The Registrar

\*Only for those who are successful in Stage 1

\*\*Attendance will not be taken in classes and no quizzes or any other exams will be administered on 25th December.





# OPPORTUNITIES OFFERED TO EASTERN MEDITERRANEAN UNIVERSITY STUDENTS

- 108 associate and undergraduate programs, 96 post graduate programs in 12 Faculties and 4 Schools, Foreign Languages and English Preparatory School
- International environment consisting of students from 110 different countries and academic staff members from 35 countries
- Globally recognised diploma
- International accreditations that are held by a handful of institutions
- 3,000,000 m<sup>2</sup> modern campus
- English education in accordance with international standards
- Language learning opportunities – German, French, Russian, Spanish, Italian & Greek
- Student Exchange programs
- A modern library with an indoor space capacity of 7,000 m<sup>2</sup> and comfortable studying areas – offering 160,000 books and approximately 250 academic memberships
- More than 30 research centers
- Accommodation opportunity for more than 10,000 students in the dormitories
- Indoor sports center with a capacity of 3,500 seats, 5,000 seat capacity stadium with a tartan track, cardio center, spinning hall, TRX hall and 66,500 m<sup>2</sup> outdoor sports area
- More than 50 students clubs
- Health Center with 9 specialist doctors
- Psychological Counseling, Guidance and Research Center (PDRAM)
- Alumni Communication and Career Research Center
- A chance to receive education in a peaceful and safe environment
- More than 55,000 graduates who are successful in their professional lives
- Modern classrooms, laboratories, strong computer and internet connections
- Collaborations with over 200 institutions in more than 30 different countries



## 2.1 THE HIDDEN SECRET

North Cyprus is a natural paradise and a home to myriad legends that will fill you with wonder. It is the third largest island in the Mediterranean and has a special geographical location with its proximity to Europe, Asia and Africa. The beautiful landscape surrounded by turquoise waters under the fascinating blue sky will leave you mesmerized.

The exciting nightlife filled with entertainment and delights along with the friendly hospitality of the locals ensures a gracious welcome and an unforgettable experience. The endless adventures of the island are waiting to be discovered and you cannot afford to miss any of them, so get ready for an exciting experience!

## 2.2 AT A GLANCE

Official name: Turkish Republic of Northern Cyprus (TRNC)

Capital: Nicosia

President: Ersin Tatar

Official languages: Turkish

Geographical position: Middle East, eastern part of the Mediterranean Sea

Time zone: UTC +2 (in summer: UTC+3)

Official currency: Turkish Lira (TRY)

Seasons: Long dry summers and short, rainy winters

Average annual temperature: 19°C

Swimming season: April-October

Country Code: 0090

Area Code: 0392

## 2.3 PLACES TO VISIT

Lefkoşa (Nicosia)

The capital city of North Cyprus. The city has a unique administrative division: one side belongs to the Turkish Cypriots and the other to the Greek Cypriots. The last divided city in the world.

Girne (Kyrenia)

This city is located on the northern coast of Cyprus. Girne has a distinctive and unique flavor, beautiful mountain views and plenty of historical and architectural monuments.



Karpaz Peninsula (Karpas)

Located in the eastern part of the island, it is a place for nature lovers and secluded holidays. Clean sandy beaches merge with the turquoise Mediterranean Sea. Here you can enjoy a holiday close to nature, meet Cyprus symbolic donkeys and visit the Turtle Beach.

Some historical places to visit

- Walled City of Famagusta
- Salamis Ruins with its Bath House, Gymnasium and Theatre
- Saint Barnabas Church
- Palm Beach
- Abbey of Bellapais
- Kyrenia Harbour
- Saint Hilarion Castle



### 3.1 IMMIGRATION INFORMATION (Residence Permit)

All students studying in TRNC are required by law to obtain a residence permit. There are penalties for those who fail to do so, and you may not be permitted to leave the island until you pay the penalty for staying on the island on an illegal status. Please remember that you are required to open a file within one month of your entry to the island. Otherwise you will need to pay the applicable penalty fee. For residency updates please visit <https://registrar.emu.edu.tr/en/announcements>

*For the application process, please refer to page 21.*

#### **\*For NEWLY registered students only**

For other details and fees please consult with the Student Services Office.

Tel: 0 392 630 2950/ 1111/ 1216/ 1217

Fax: 0 392 630 1317/ 1241

Email: [registrar@emu.edu.tr](mailto:registrar@emu.edu.tr)

[studentservices@emu.edu.tr](mailto:studentservices@emu.edu.tr)

Website: [registrar.emu.edu.tr](http://registrar.emu.edu.tr)

### 3.2 DISCIPLINARY ACTIONS

For those whose behaviours do not meet student and society's moral values inside or outside the campus, one of the following penalties will be applied by the EMU Student Disciplinary Committee depending on the type of offence.

- Warning
- Short-term suspension from the University (1-30 days)
- Medium and long term suspension from the University (31 days-1 semester)
- Dismissal from the University

Any act of cheating or any behaviour which has an effect on exam results, is deemed as a misdemeanour. Penalty for such behaviour is short-term suspension from the University. In the case of repeated misbehaviour, penalty increases exponentially.

#### **The grants or scholarships of students who receive a suspension penalty are terminated.**

Families are informed about a student's misbehaviour outside the campus. Students found guilty due to off-campus misbehaviour by Judicial Court are referred to the EMU Student Disciplinary Committee where they may also be issued a penalty.

Penalties are not only announced on the University boards, but families are also informed about the case. <http://mevzuat.emu.edu.tr/>

### **3.3 ACCOMMODATION**

EMU has 19 on-campus dormitory complexes that can accommodate about 10,000 students. New students are given priority in placement. Students may also rent flats or rooms in private accommodation in Famagusta.

#### **OUR DORMITORIES**

1. EMU Sabancı
2. EMU 2
3. EMU 3
4. EMU 4

#### **PRIVATE DORMITORIES**

1. Alfam
2. Akdeniz
3. Marmara
4. Longson
5. Uğursal
6. Ramen
7. Inn Dorm
8. Kamacioğlu
9. Prime Living
10. Golden Plus
11. Novel
12. Astra Plus
13. Pop Art
14. Nural
15. Grand Aras

The International Office organizes a 1 night temporary placement for overseas students at selected dormitories and it is up to the student to decide during that duration which dormitory they would like to reside in, indefinitely.

<https://dormitories.emu.edu.tr/en>

### **3.4 LIVING EXPENSES**

The cost of living in North Cyprus will depend on your standard of living, but in general it is around US \$ 300 – US \$ 500 per month (excluding tuition fees, textbooks and accommodation).



### **3.5 TRANSPORTATION**

The university owned free shuttle services are available between the campus and city center. The route map is available at the back page of this handbook.

<https://transportation.emu.edu.tr/en>

### **3.6 STUDENT SERVICES FUND**

An amount of \$200 is collected from all students at each registration.





### 4.1 STUDENT CLUBS

The Social and Cultural Activities Unit has a mission of turning our students into active, creative, social and self-confident individuals. The Social and Cultural Activities Unit organizes concerts, conferences, trips, camps, various sports tournaments, exhibitions and festivals for all students.

Life at EMU is fun. Students have the opportunity to participate in a variety of extra-curricular activities and may join a wide range of social and cultural events in the university. Additionally, every year EMU organizes the 'International Night' as well as the 'International Spring Festival' which include all kinds of social, cultural and sport activities.

<http://activity.emu.edu.tr/>

### 4.2 INTERNATIONAL STUDENT SOCIETIES AND EVENTS

The goal of the International Office is to assist new students with their transition into campus life and provide them with a network of international friends to encourage academic and social exploration for as long as needed. Thus, the International Office helps societies create cultural events such as trips, celebrations and much more.

<https://activity.emu.edu.tr/en>



## 5.1 STUDENT SERVICES OFFICE

Operating under the Registrar's Office, the Student Services Office works in coordination with other units responsible for life in campus and student related academic and social issues. The Student Services Office provides the services listed below:

- Immigration Procedures,
- Campus Card,
- Crisis Management,
- Diploma Approval Procedures,
- Apostille Approval Procedures,
- Embassy Procedures for International Students,
- Call Center.

## 5.2 CAMPUS CARD

- A Campus card is automatically prepared for each student who completes his/her registration.
- Campus cards shall be ready within a period of 14 days to a month following the registration of the students and should be personally collected from the Campus card desk located in the Registrar's Office.
- Students with a broken or missing Campus card should apply to the Student Services Office for the broken/missing card procedures.
- The ready Campus cards shall be collected by the students within the specified dates from the Registrar's Office.
- Students must bring their campus cards to all exams.

## 5.3 CRISIS MANAGEMENT

Crisis Management is a cooperation system established for the students of Eastern Mediterranean University. It helps to keep students' possible health problems, injuries or daily issues under control. All the operations (public security, medical and moral assistance, loss assessment, information sharing between institutions, fast communication and intervention) are controlled by the Crisis Management Center in the event of a crisis.

## 5.4 APOSTILLE APPROVAL PROCEDURES

Apostille procedures are required for graduate students who are to study/work in Europe or the United States. Apostille approval is done on behalf of students by the Student Services Office at the Registrar's Office.

## 5.5 EMBASSY PROCEDURES FOR INTERNATIONAL STUDENTS

All international students graduating from EMU are expected to have their diplomas approved by their country's embassies in Ankara.

## 5.6 CALL CENTER

Eastern Mediterranean University Call Center provides services for the incoming calls in accordance with the requests and needs of the callers. EMU Call Center is here to provide help to students on all issues; (+90 392 630 11 11).

Please visit the Student Services Office website for more information

<https://registrar.emu.edu.tr/en/student-services-office>

## 5.7 IMMIGRATION PROCEDURES (Residence Permit)

Eastern Mediterranean University offers International Students an opportunity to complete their Immigration Procedures within the campus by bringing officers from District Governor's Office, Hospital and Tax Department together at the beginning of each academic semester.

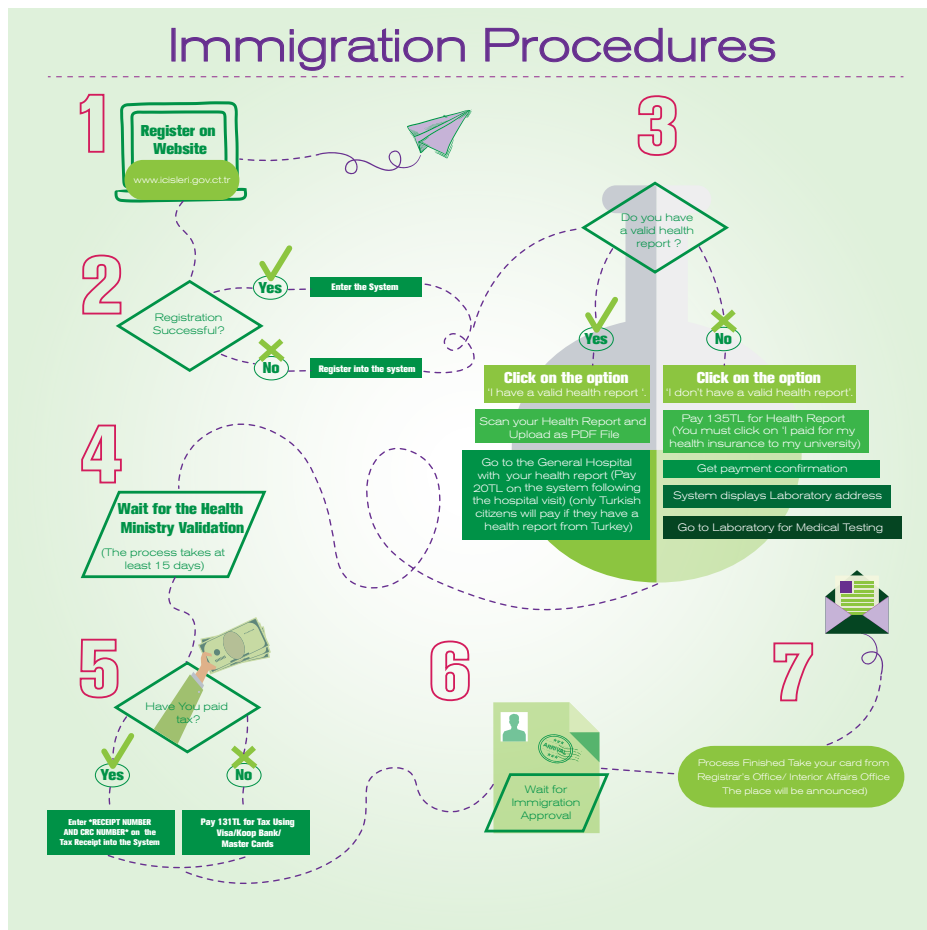
We would like to share with you the latest information regarding the Student Residency Permit process. It is important that those students, whose Student Residency Permit expired on 30th September 2020 and are currently on the island, first complete their course registration process. It is compulsory that all students complete their application for Student Residency Permit within 60 days. According to the information provided by the TRNC Ministry of Interior, Immigration Office, students must be on the island in order to be able to complete the 2020-2021 immigration procedures. Students who are outside of TRNC and will study their Fall 2020-2021 academic semester online, will be able to complete their immigration procedures for 6 months upon their arrival to study for the first face-to-face (Spring 2020-2021) scheduled on ground education semester.

Students who departed the Island prior to completion of their Student Residency Permit process in the 2019-2020 academic semester, will not pay a penalty when re-entering the island in the first term, which will be held face to face. However, students must complete this within the time frame given upon entry.

The new Student Residency Permit will be sent as a QR code document to students via e-mail or telephone.

## IMMIGRATION PROCEDURE (Residence Permit)

In order to complete Immigration Procedures, it is mandatory to enter TRNC with a passport. Immigration procedures are completed online. Follow the steps listed below to complete the process:



## IMPORTANT INFORMATION

Students who complete the registration procedures are required to complete the immigration procedures within the period of time provided upon their entry to TRNC.

Students who fail to complete the immigration procedures within the specified period of time will be subject to a daily penalty due to not holding a legal residence permit.

Students coming from third countries are obliged to renew their health reports every year. Students coming from Turkey are obliged to renew their health reports every 2 years.

## 6.1 REGISTRATION

### INTERNATIONAL STUDENTS

Conditions for Admission and Registration.

The applicant must submit a certified copy of Higher Secondary School Certificate or Intermediate Certificate or the equivalent, demonstrating that s/he has satisfactorily graduated from a secondary school, and must arrange for other relevant certified documents, such as transcripts or detailed mark sheets, to be released to EMU.

### APPLICATION TO UNDERGRADUATE PROGRAMS

Applications to the undergraduate programs are accepted twice a year.

### ACCEPTED HIGH SCHOOL CERTIFICATES FOR UNDERGRADUATE PROGRAMS

High School Diploma, Higher Secondary School Certificate, General Certificates of Secondary Education (GCSE), Higher Secondary Certificate, Upper Secondary /Secondary School/ High School/ Senior High School Leaving Certificate, Testimonial, Secondary Education Certificate, Senior School Certificate, Matriculation Examination Certificate, SAT , WAEC , WASSCE , NECO , JAMB, BACCALAUREATE.

### ADMISSION REQUIREMENTS TO GRADUATE PROGRAMS

- Applications to the graduate programs at EMU can be made throughout the year, until one month prior to the beginning of each semester.
- Applicants are advised to make their applications by the end of December or August for Spring and Fall semesters, respectively. Application deadlines are announced on the web site of the Institute for Graduate Studies and Research and the Registrar's Office. Prospective applicants are required to apply online.

<https://grad.emu.edu.tr/en/admission>



## 6.2 ACADEMIC ADVISING

The aim of the Student Advisorship at Eastern Mediterranean University is to help students in solving the problems they may encounter primarily in academic areas, to provide guidance, to assist them in their chosen profession, to inform them about the facilities of the university and faculty/school, to monitor their academic performance and success, in case of failure, to provide relevant assistance and to help in course selection. Academic advisors are faculty members who are appointed by the relevant Department Heads or Directors and announced on department boards.

<http://mevzuat.emu.edu.tr>

## 6.3 CLASS ATTENDANCE

Students are responsible for attending the lessons, laboratory hours and workshops, all the exams that take place within the semester and all other projects/applications to fulfil program requirements. A student who fails to attend 20% or more of a course or its applications without any excuse, fails the course and receives a Nil Grade (NG). The student is accepted as unsuccessful due to not attending the course.

<http://mevzuat.emu.edu.tr>

## 6.4 GRADE CALCULATION (CGPA - GPA)

A student's academic achievement for each term is expressed numerically by an index referred to as the 'Grade Point Average' - GPA. The GPA is the weighted average of course grades. When calculating the course grade, mid-term exam(s), the final exam, lab/workshop reports and/or exams (if applicable), tests, projects, and/or homework are taken into consideration. The CGPA is the cumulative average of all courses taken during all semesters.

<http://mevzuat.emu.edu.tr>







### 7.1 IDENTIFICATION CARDS (CAMPUS CARDS)

An ID card is issued to each undergraduate and graduate student. The card is a debit card and can be used for payment in any shop. An ID card can be asked to be presented in order to attend events or activities. Additionally, the card may be credited with units which can be debited for payments.

<http://mevzuat.emu.edu.tr>

### 7.2 HEALTH CENTER

Specialists provide free health services both to students and staff members in 7 different areas, namely internal medicine, dermatology, dentistry, E.N.T, gynaecology, psychiatry, urology and ophthalmology. In addition to these services, the center provides first aid and short-term bed-services.

[www.emu.edu.tr/healthcenter](http://www.emu.edu.tr/healthcenter)



### 7.3 PSYCHOLOGICAL SUPPORT

EMU-PDRAM's services are available for those times when you need someone to talk to, sort a situation out, or review what is not working well in your life. EMU-PDRAM strictly observes confidentiality as its guiding principle. If a student is at risk of harm to self or others, confidentiality may be broken for safety purposes.

<https://pdram.emu.edu.tr/en>



### 7.4 ALUMNI COMMUNICATION AND CAREER RESEARCH DIRECTORATE (MIKA)

MIKA offers career consultancy services for students both during their study period and following their graduation. In this respect, seminars, workshops and training programs aiming for a sustainable career are frequently organized by the Directorate.

<https://alumni.emu.edu.tr/en>



### 7.5 CANTEENS AND CAFETERIAS

About 35 cafeterias and canteens on EMU campus provide students with clean and good-quality food services at reasonable prices. There is one Table D'Hote restaurant on the campus which serves healthy meals at an affordable price. All meals are prepared in accordance with the daily calorie needs of the students.

<https://cafeterias.emu.edu.tr/en>

## 7.6 BANK SERVICES

On the EMU campus, there are two branches of Koop Bank and a number of ATMs belonging to different banks where foreign Visa or Master Cards can be used to withdraw money.

<http://www.koopbank.com>

## 7.7 REGISTRAR'S OFFICE

The Registrar's office deals with any kind of student-related issues such as official documents, transcripts, leave of absence (freezing registration), and graduation documents etc. Additionally, the unit guides students in dealing with the procedures at the Turkish Embassy in Nicosia.

<https://registrar.emu.edu.tr/en>

## 7.8 INTERNATIONAL OFFICE

The office is dedicated not only to looking after the welfare of our international students but also making sure that they are provided with a full range of social and cultural activities. The office takes full advantage of EMU's outstanding facilities, including the new Cultural and Conference Center, and the private Beach Club to offer students an experience they will never forget. Every year, representatives of Student Societies are elected and these students collaborate with the International Office to help and assist members of their societies during their studies at EMU.

<http://io.emu.edu.tr/en>, [facebook.com/ioemu](https://facebook.com/ioemu),

<https://studentexchange.emu.edu.tr/en>

[twitter.com/io\\_emu](https://twitter.com/io_emu), [instagram.com/io\\_emu](https://instagram.com/io_emu)

## 7.9 SOCIAL & CULTURAL ACTIVITIES UNIT

Students can contact the unit in order to join or form a new club. After one year of an active membership in any club, students can apply for being a candidate in the executive board of the relevant club. Club members also benefit from the facilities provided to them on behalf of the Social and Cultural Activities Directorate. Students who would like to join a club can fill in a form available on EMU's website.

<http://activity.emu.edu.tr>

## 7.10 LIBRARY

The library views continuous development as an absolute necessity. It encourages scientific research and information literacy at the university and provides support for activities in these areas and also fulfils an important function through compiling EMU publications, offering this archive to its readers, and promoting it worldwide. During the exam period, the library works 24 hours a day and provides comfortable and conducive areas to study alone or in groups. Books can be borrowed for up to 1 month depending on the academic level. The library has over 150,000 printed books as well as thousands of e-books and online journals available to all through online access.

<http://library.emu.edu.tr>

## 7.11 POST OFFICE

The university's Post Office is located at Sabanci Dormitory, Ground Floor. The Post Office is responsible for the organization, operation and provision of postal services, the safe and fast handling and delivery of postal items. Students can send/ receive parcels to/ from any part of the world.

## 7.12 LALA MUSTAFA PAŞA SPORTS COMPLEX

With a capacity of 3500 seats, the LMP Sports Complex boasts 3 Squash halls, a Jui-Jitsu studio, tartan track and a football pitch, all providing sports services at international standards. It has a mission of spreading sports activities nationwide. This directorate takes part in national leagues in the fields of volleyball, basketball, athletics, tennis, handball, billiards, chess, wrestling, cycling, table tennis, triathlon, football and tennis. Students representing the university in the leagues are awarded scholarships by the university. Last but not least, the cricket, bowling, darts, swimming, futsal and football teams successfully represent the University in the inter-university tournaments and leagues. The Sports Complex is accessible to all students.

<https://spor.emu.edu.tr/en>

### 7.13 OFF CAMPUS FACILITIES

EMU Beach Club



EMU Beach Club



It is used throughout the year for beach and pool parties and as a place of relaxation for both staff and students. A full restaurant service is available, and with a large swimming pool and family facilities, students are able to take full advantage of the Mediterranean climate in an exclusive high-class setting.

<https://ww1.emu.edu.tr/en/campus/international-office/beach-club/1256>

Rauf Raif Denktaş Culture and Congress Center



Rauf Raif Denktaş Culture and Congress Center houses convention and conference rooms, exhibition halls, museums, art workshops and more.

\*These off campus facilities host most of EMU's cultural activities, conferences, workshops and seminars taking place throughout the year. EMU's bus line number 3 goes to both of these destinations. For the bus schedule please refer to page 24 of this booklet.

<https://ww1.emu.edu.tr/congresscenter>





## FOREIGN LANGUAGES AND ENGLISH PREPARATORY SCHOOL

### ENGLISH LANGUAGE REQUIREMENTS

Students who are enrolled in English-medium programs at Eastern Mediterranean University (EMU) but do not have a valid English proficiency certificate are required to take the English Proficiency Exam and meet the requirements of their departments. The exemption criteria and the equivalent English Preparatory School (EPS) success requirements stipulated by Foreign Languages and English Preparatory School (FLEPS) for students who have any valid language (English) proficiency certificate are as follows:

For Departments requiring minimum 50% on the EMU FLEPS English Proficiency Exam Stage II	For Departments requiring minimum 60% on the EMU FLEPS English Proficiency Exam Stage II	For Departments requiring minimum 70% on the EMU FLEPS English Proficiency Exam Stage II
IELTS (minimum 5.0)	IELTS (minimum 5.5) (5.0 - Proficiency Stage II or ENGL 181-182 courses)	IELTS (minimum 6.0) (5.5 - Proficiency Stage II)
TOEFL iBT (minimum 60)	TOEFL iBT (minimum 65) (60 - Proficiency Stage II or ENGL 181-182 courses)	TOEFL iBT (minimum 72) (65 - Proficiency Stage II)
TOEFL PBT (minimum 497)	TOEFL PBT (minimum 513) (497 - Proficiency Stage II or ENGL 181-182 courses)	TOEFL PBT (minimum 530) (513 - Proficiency Stage II)
TOEFL CBT (minimum 170)	TOEFL CBT (minimum 183) (170 - Proficiency Stage II or ENGL 181-182 courses)	TOEFL CBT (minimum 197) (183 - Proficiency Stage II)
City & Guilds (minimum B1 Pass)	City & Guilds (minimum B1 First Class Pass) (B1 Pass - Proficiency Stage II or ENGL 181-182 courses)	City & Guilds (minimum B2 Pass) (B1 First Class Pass - Proficiency Stage II)
GCE/IGCE (minimum C)	GCE/IGCE (minimum C)	GCE/IGCE (minimum B) (C - Proficiency Stage II)
FCE (minimum C)	FCE (minimum C)	FCE (minimum B) (C - Proficiency Stage II)
CPE/CAE (minimum C)	CPE/CAE (minimum C)	CPE/CAE (minimum B) (C - Proficiency Stage II)
LCCI (ESP) (minimum Level 1 Distinction)	LCCI (ESP) (minimum Level 2 Pass). (Level 1 Distinction - Proficiency Stage II or ENGL 181-182 courses)	LCCI (ESP) (minimum Level 2 Distinction) (Level 2 Pass - Proficiency Stage II)
WAEC/WASSCE/SSSCE/NECO/NABTEB/ZIMSEC (minimum D7)	WAEC/WASSCE/SSSCE/NECO/NABTEB/ZIMSEC (minimum C6) (D7 - Proficiency Stage II or ENGL 181-182 courses)	WAEC/WASSCE/SSSCE/NECO/NABTEB/ZIMSEC (minimum C5) (C6 - Proficiency Stage II)

UCE (5-6)	UCE (3-4) (5-6 - Proficiency Stage II or ENGL 181-182 courses)	UCE (1-2) (3-4 - Proficiency Stage II)
NSC (ieb) (minimum 50% or 4)	NSC (ieb) (minimum 60% or 5) (50% or 4 - Proficiency Stage II or ENGL 181-182 courses)	NSC (ieb) (minimum 70% or 6) (60% or 5 - Proficiency Stage II)
ECZ (minimum 6)	ECZ (minimum 5) (6 - Proficiency Stage II or ENGL 181-182 courses)	ECZ (minimum 5)
HIGCSE/NSSC (minimum 3)	HIGCSE/NSSC (minimum 2) (3 - Proficiency Stage II or ENGL 181-182 courses)	HIGCSE/NSSC (minimum 2)
KNEC (minimum C)	KNEC (minimum C+) (C - Proficiency Stage II or ENGL 181-182 courses)	KNEC (minimum B-) (C+ - Proficiency Stage II)
NECTA (CSEE) (minimum C)	NECTA (CSEE) (minimum B) (C - Proficiency Stage II or ENGL 181-182 courses)	NECTA (CSEE) (minimum B+) (B - Proficiency Stage II)
SAT (Writing 340 and Reading 400 or 740 Total)	SAT (Writing 350 and Reading 410 or 760 Total) (Writing 340 and Reading 400 or 740 Total - Proficiency Stage II or ENGL 181-182 courses)	SAT (Writing 360 and Reading 420 or 780 Total) (Writing 350 and Reading 410 or 760 Total - Proficiency Stage II)
NEAEA (minimum C)	NEAEA (minimum B) (C - Proficiency Stage II or ENGL 181-182 courses)	NEAEA (minimum B)

## IMPORTANT INFORMATION

1. For the departments who have the courses ENGL181-182 in their program, students who have successfully completed the English Preparatory Program at another university and students who are exempted from English Preparatory Program (the validity of the document is evaluated by the FLEPS Administration) in a different university are offered two choices:

a) Take ENGL181-182 courses

b) Take the EMU FLEPS English Proficiency Exam Stage II. If the student receives a score of minimum 60%, s/he is enrolled in ENGL191-192 courses. If not, the student will have to take ENGL181-182 courses.

2. Students who have no valid documents regarding their language level are required to take the EMU FLEPS English Proficiency Exam Stage I. If successful, these students are required to sit the EMU FLEPS English Proficiency Exam Stage II.

3. The minimum requirement is 50% for most departments, 60% for 3 departments and 70% for 3 faculties. Departments / Faculties with minimum 60% and 70% success conditions are as follows:

Department Code	Department	Condition for Success
4B	Psychology	Minimum 60%
4C	Translation and Interpretation	Minimum 60%
A1	Foreign Languages Education	Minimum 60%
J1	Faculty of Pharmacy	Minimum 70%
91	Faculty of Medicine	Minimum 70%
L3 / L4	Faculty of Dentistry	Minimum 70%

4. Students whose departments require minimum 60% in the EMU FLEPS English Proficiency Test Stage II can enrol in ENGL191-192 courses if they score minimum 60%.

5. Since Foreign Languages Education Department (FLE) program does not entail ENGL181-182 and ENGL191-192 courses, these courses are not applicable to FLE students. They need to get minimum 60% in order to be exempted from English Preparatory Programs. Students who score 50-59% are subject to be interviewed at FLE Department and upon being successful, they are eligible to start their education in the FLE Department.

6. Students who are not successful in English Proficiency Exam Stage II attend the English Preparatory School for a minimum of one semester or one year, depending on their English language level.  
For more information, please visit <http://fleps.emu.edu.tr>.

For more information, please visit <http://fleps.emu.edu.tr>.

## Online Application Guide and Registration Procedure

Online Application Guide: <https://www.youtube.com/watch?v=FvEkvF-mTUU>

### Registration Procedures:

We have initiated a new online registration system in order to facilitate the registration process of our new students. You can complete your registration process by following the steps listed below:

1. To login, you should access the student portal - <https://stdportal.emu.edu.tr> and enter your Student Number and Password which are as follows for new students:

*Student number: 1111111*

Password: \*ID/Passport No.

\*Your ID/Passport No. is the same number that you wrote in your application form.

2. By logging in your portal, you will be able to register. If you have been accepted in more than one program, you should choose the program you would like to be enrolled in.

3. Tuition Fee can be paid online by using a credit card through the student portal (<https://stdportal.emu.edu.tr>). The link for online payment can be found under the Tuition Fee Payment Information section. If you are planing to pay your tuition fee via bank transfer, please upload the bank receipt using this link: <https://stdportal.emu.edu.tr>.

4. After you complete the Tuition Fee payment procedure, you will be a registered student at our university with the student number 11111111 . You can continue all the student-related procedures via your portal: <https://stdportal.emu.edu.tr>.

To find detailed information about EMU, Dormitories, Campus Life, Rules and Regulations, and other issues, please visit <https://www.emu.edu.tr/prospectivestudents>.

Please contact [international.center@emu.edu.tr](mailto:international.center@emu.edu.tr) for your application inquiries

WhatsApp Helpline for prospective students +905338575418

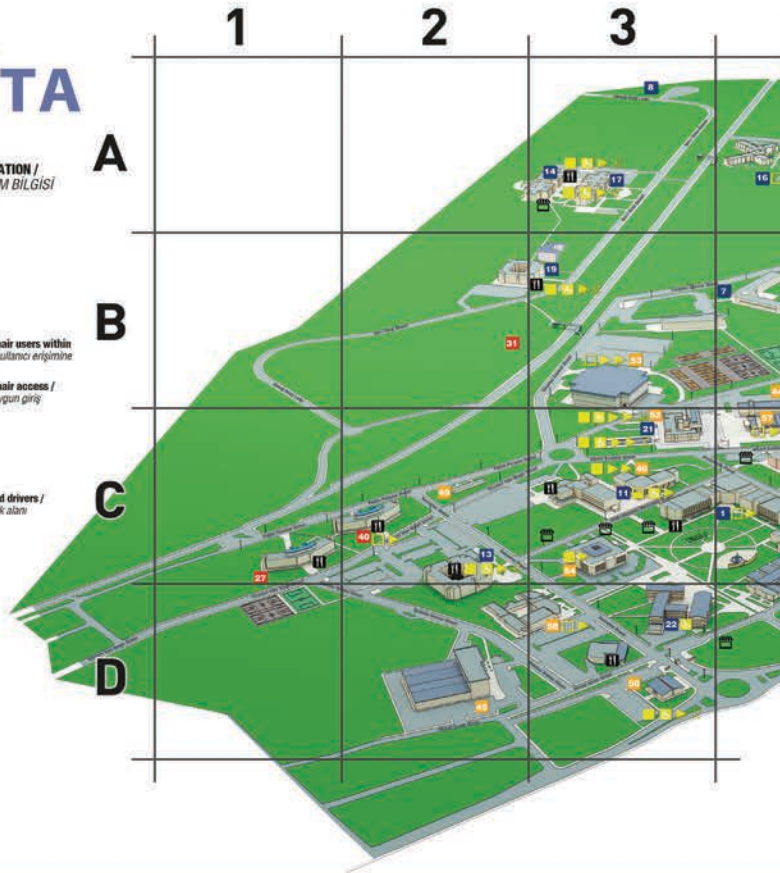
# MAP HARİTA

## WHEELCHAIR ACCESS INFORMATION / TEKERLEKLİ SANDALYE ERİŞİM BİLGİSİ

-  Full access to all floors /  
Tüm katlara giriş
-  Mostly accessible /  
Genelde erişilebilir
-  Ground floor only /  
Sadece zemin kat
-  Toilets accessible to wheelchair users within  
building / Tekerlekli sandalye kullanıcılarına  
uygun tuvaletler
-  Entrance suitable for wheelchair access /  
Tekerlekli sandalye erişimine uygun giriş
-  Entrance with ramp /  
Rampalı giriş
-  Slope over 10% /  
%10'dan fazla eğim
-  Car parking space for disabled drivers /  
Engelli sürücüler için araba park alanı



<http://bilgi.emucampusmap>



- |    |  |
|----|--|
| 1  | Central Lecture Halls   C4<br>Merkezi Derslikler   C4  |
| 2  | Department of Civil Engineering   C5<br>İnşaat Mühendisliği Bölümü   C5  |
| 3  | Department of Computer Engineering   B6<br>Bilgisayar Mühendisliği Bölümü   B6   |
| 4  | Department of Electrical & Electronic Engineering   B5<br>Elektrik-Elektronik Mühendisliği Bölümü   B5                           |
| 5  | Department of Industrial Engineering   B5<br>Endüstri Mühendisliği Bölümü   B5   |
| 6  | Department of Mechanical Engineering   C4<br>Makine Mühendisliği Bölümü   C4   |
| 7  | Eastern Mediterranean Doğa College   B4<br>Doğu Akdeniz Doğa Koleji   B4   |
| 8  | Eastern Mediterranean Doğa Primary Sch.   A3<br>Doğu Akdeniz Doğa İlkokulu   A3  |
| 9  | Faculty of Architecture   C5<br>Mimarlık Fakültesi   C5  |
| 10 | Faculty of Arts & Sciences   C4<br>Fen ve Edebiyat Fakültesi   C4  |
| 11 | Faculty of Business & Econ. Sch. of Business & Finance   C3<br>İşletme ve Ekonomi Fakültesi - İşletme ve Finans Yüksekokulu   C3 |
| 12 | Faculty of Communication & Media Studies   C4<br>İletişim Fakültesi   C4   |
| 13 | Faculty of Education   C2<br>Eğitim Fakültesi   C2   |
| 14 | Faculty of Health Sciences - Sch. of Health Services   A3<br>Sağlık Bilimleri Fakültesi - Sağlık Hizmetleri Yüksekokulu   A3     |
| 15 | Faculty of Law - School of Justice   C4<br>Hukuk Fakültesi - Adalet Meslek Yüksekokulu   C4                                      |

- |    |  |
|----|--|
| 16 | Faculty of Medicine   A4<br>Tıp Fakültesi   A4   |
| 17 | Faculty of Pharmacy   A3<br>Eczacılık Fakültesi   A3   |
| 18 | Faculty of Tourism   C5<br>Turizm Fakültesi   C5   |
| 19 | Foreign Language & English Preparatory School and Annex   B3<br>Yabancı Diller ve İngilizce Hazırlık Okulu ve Ek Binası   B3 |
| 20 | Institute of Graduate Studies & Research   C4<br>Uzendiştü Öğretim Öğretim ve Araştırma Enstitüsü   C4                       |
| 21 | Rector's Office   C3<br>Rektörlük   C3   |
| 22 | School of Computing & Technology   D3<br>Bilgisayar ve Teknoloji Yüksekokulu   D3  |
| 23 | Visual Arts & Vis. Com. Design - Techno Park   B4<br>Görsel Sanatlar ve Gör. İletişim Tasarım Bölümü - Tekno Park   B4       |
| 24 | Akdeniz Dormitory   B7<br>Akdeniz Yurdu   B7   |
| 25 | Aifam Dormitory   B6<br>Aifam Yurdu   B6   |
| 26 | Aifam Vista Dormitory   B6<br>Aifam Vista Yurdu   B6   |
| 27 | EMU 1 Dormitory   C1<br>DAU 1 Yurdu   C1   |
| 28 | EMU 2 Dormitory - EMU Dorm. Directorate Office   B7<br>DAU 2 Yurdu - DAU Yurtlar Müdürlüğü   B7                              |
| 29 | EMU 3 Dormitory   A7<br>DAU 3 Yurdu   A7   |
| 30 | EMU 4 Dormitory   A6<br>DAU 4 Yurdu   A6   |





**Academic / Akademik**

**Dormitory / Yurt**

**Administrative / Yönetmel**

**Food Facilities / Yiyecek Mekanları**



**Kiosk / Büfe**



**Post Office / Postane**



**Cashomat / Bankamatik**



**Bank / Banka**



**Doğu Akdeniz  
Üniversitesi**

**Eastern Mediterranean  
University**

[www.emu.edu.tr](http://www.emu.edu.tr)

- 31 Golden Plus Dormitory | B2  
Golden Plus Yurdu | B8
- 32 Halide Edip Guest House - I | B7  
Halide Edip Misafirhanesi - I | B7
- 33 Home Dorm | B8  
Home Dorm Yurdu | B8
- 34 Kamacıoğlu Dormitory | B5  
Kamacıoğlu Yurdu | B5
- 35 Longson Dormitory | B6  
Longson Yurdu | B6
- 36 Marmara Dormitory | B6  
Marmara Yurdu | B6
- 37 Namık Kemal Guest House - II | B7  
Namık Kemal Misafirhanesi - II | B7
- 38 Prime Living Dormitory | A8 and B8  
Prime Living Yurdu | A8 and B8
- 39 Ramen Dormitory | A8  
Ramen Yurdu | A8
- 40 Sabancı Dormitory | C2  
Sabancı Yurdu | C2
- 41 T.C. Yurtkur Necmettin Erbakan Dormitory Block 1 | B7  
T.C. Yurtkur Necmettin Erbakan Yurdu Blok 1 | B7
- 42 T.C. Yurtkur Necmettin Erbakan Dormitory Block 2 | B7  
T.C. Yurtkur Necmettin Erbakan Yurdu Blok 2 | B7
- 43 Uğursal Dormitory | B6  
Uğursal Yurdu | B6
- 44 Accounting Affairs & Personnel Affairs Office | B4  
Mali İşler ve Personel İşleri Modülüğü | B4
- 45 Administrative Facilities | D2  
Yönetmel Hizmetler Binası | D2

- 46 Alumni Comm. & Career Development Office | C3  
Mezunlarla İlişim ve Kariyer Araştırma Modülüğü | C3
- 47 Church | B7  
Kilise | B7
- 48 Computer Center | C4  
Bilgi İşlem Merkezi | C4
- 49 Continuing Education Center - EMU Coop Ltd. | C2  
Sürekli Eğitim Merkezi - EMU Kooperatifliği | C2
- 50 DAU-TV & Radio | D3  
DAU-TV ve Radyo | D3
- 51 Health Center - Psy. Counseling Guid. & Res. Center | C6  
Sağlık Merkezi - PDRAM | C6
- 52 International Office | C3  
Uluslararası Ofis | C3
- 53 Lala Mustafa Paşa Sports Complex | B3  
Lala Mustafa Paşa Spor Kompleksi | B3
- 54 Library | C3  
Kütüphane | C3
- 55 Mosque | B5  
Camii | B5
- 56 Open Air Sports Facilities | B4  
Spor Sahaları | B4
- 57 Registrar's Office | C4  
Öğrenci İşleri | C4
- 58 Social & Cultural Activities Center | D3  
Sosyal ve Kültürel Aktiviteler Merkezi | D3
- 59 Stadium | B5  
Stadyum | B5
- 60 Table d'hotel Restaurant | C4  
Tablodo Restoran | C4
- 61 Technical Affairs | B5  
Teknik İşler Modülüğü | B5



## EMU Dormitories

Name of the Dormitory	Female / Male Dormitory	Room Type	Room Area m <sup>2</sup>	WC / Shower	Free Internet Speed (mbps)	Semester Fee in Turkish Lira (TL/ ₺)	
						Upfront (₺)	Instalments (₺)
<b>SABANCI</b>	Female/ Male blocks	Triple	15	in corridors	100 mbps	₺ 3.150	₺ 3.400
<b>EMU 2</b>	Male	Special double	20	in room	100 mbps	₺ 4.500	₺ 4.850
	Male	Double	27	shared	100 mbps	₺ 4.150	₺ 4.500
	Male	Triple	27	shared	100 mbps	₺ 3.300	₺ 3.600
<b>EMU 3</b>	Female/ Male Blocks	Corner Single	10	shared	100 mbps	₺ 6.400	₺ 6.900
	Female/ Male Blocks	Standard Double	12	shared	100 mbps	₺ 3.850	₺ 4.150
	Female/ Male Blocks	Corner Double	10	shared	100 mbps	₺ 3.550	₺ 3.800
<b>EMU 4</b>	Female	Quadruple	30	in room	100 mbps	₺ 2.950	₺ 3.200

## EMU Dormitories - General Info

- All dormitory rooms are equipped with a fridge, a split-unit air conditioner and a phone.
- The beds in dormitories are bunk beds and there is a study area below each bunk.
- Kitchens are available for students' common use on either each floor or block.
- There is a TV room, a study room and a laundry on each dormitory floor or block.
- Housekeeping, electricity (tariff) and water services are included in the accommodation fees.
- *Detailed information on such services can be obtained from the relevant dormitory directorate.*
- Deposit payment is not requested in EMU Dormitories.
- Students can benefit from the 3-course meal service by registering for the dormitory package program except for those residing in EMU 2 Special Double Room and EMU 3 Single Rooms.

## For more information

### ■ EMU Dormitories and Cafeterias Directorate

#### ■ Director

Cem Çirakoğlu  
Tel: (+09) 392 630 1328  
Fax: (+09) 392 630 1839  
E-mail: yurt@emu.edu.tr

### ■ EMU Dormitories Unit Manager

Hüseyin Kızıloklu  
Tel: (+09) 392 630 1999  
Fax: (+09) 392 630 1839  
E-mail: dau4.yurdu@emu.edu.tr

### ■ BOT Dormitories Unit Manager

Nesrin Mahir  
Tel: (+09) 392 630 1777  
Fax: (+09) 392 630 1839  
E-mail: nesrin.mahir@emu.edu.tr



**Eastern Mediterranean University**

### ■ EMU Registrar's Office

Tel: (+09) 392 630 1217  
Fax: (+09) 392 365 1317  
E-mail: registrar@emu.edu.tr

### ■ EMU Accounting Office Directorate

Tel: (+09) 392 630 1463  
Fax: (+09) 392 365 1494

### ■ EMU Sabancı

Manager: Serap Sunal  
Tel: (+09) 392 630 1830  
Fax: (+09) 392 630 1839  
E-mail: dau1.yurdu@emu.edu.tr

### ■ EMU 2

Manager: Hasan Solmazcan  
Tel: (+09) 392 630 2966  
Fax: (+09) 392 630 1839  
E-mail: dau2.yurdu@emu.edu.tr

### ■ EMU 3

Manager: Süleyman İşlek  
Tel: (+09) 392 630 3673  
Fax: (+09) 392 630 1839  
E-mail: dau3.yurdu@emu.edu.tr

### ■ EMU 4

Manager: Hüseyin Kızıloklu  
Tel: (+09) 392 630 1999  
Fax: (+09) 392 630 1839  
E-mail: dau4.yurdu@emu.edu.tr

### ■ EMU International Office

Tel: (+09) 392 630 2444  
Fax: (+09) 392 630 4033  
E-mail: io@emu.edu.tr

# Built-Operate-Transfer (BOT) Dormitories



Name of the Dormitory	Room Type	Room Area m2	Academic Year Fee (USD)		Deposit	Free Internet Speed (mbps)
			Upfront	Instalments		
ALFAM	Single	13	\$ 2.600	\$ 2.700	-	5 mbps
	Double	18	\$ 1.850	\$ 1.950	-	5 mbps
	Vista Double	30	\$ 2.800	\$ 2.900	-	5 mbps
UĞURSAL	Single	25	\$ 3.400	\$ 3.600	\$ 100	unlimited
	Double	25	\$ 1.900	\$ 2.050	\$ 100	unlimited
MARMARA	Single	28	\$ 3.300	\$ 3.500	-	unlimited
	Double	28	\$ 1.900	\$ 2.050	-	unlimited
AKDENİZ	Single	24	\$ 3.400	\$ 3.700	\$ 100	unlimited
	Double	24	\$ 1.900	\$ 2.250	\$ 100	unlimited
LONGSON	Single	22-30	\$ 3.800	\$ 3.800	-	unlimited
	Double	22-30	\$ 1.900	\$ 1.900	-	unlimited
INN DORM	Single	24	\$ 4.000	\$ 4.200	\$ 100	8 mbps
	Double	24	\$ 2.000	\$ 2.100	\$ 100	8 mbps
RAMEN	Single	24	\$ 4.490	\$ 4.690	-	unlimited
	Double	24	\$ 2.490	\$ 2.690	-	unlimited
PRIME LIVING	1+1 Suite	55	\$ 5.000	\$ 5.400	\$ 100	5 mbps
	Double	27	\$ 2.400	\$ 2.600	\$ 100	5 mbps
GOLDEN PLUS	Single	24	\$ 4.900	\$ 5.250	\$ 150	unlimited
	Double	32	\$ 2.900	\$ 3.200	\$ 150	unlimited
ASTRA PLUS	Single	17	\$ 4.250	\$ 4.500	-	unlimited
	Double	29	\$ 2.700	\$ 2.950	-	unlimited
POPART	Single	32	\$ 5.200	\$ 5.450	-	unlimited
	Double	38	\$ 3.200	\$ 3.450	-	unlimited
NOVEL CENTREPOINT	Single	26	\$ 5.595	\$ 5.595	-	unlimited
	Double	36	\$ 2.995	\$ 2.995	-	unlimited
NURAL DORM	Single	28	\$ 4.500	\$ 4.800	-	unlimited
	Double	38	\$ 3.000	\$ 3.200	-	unlimited
GRAND ARAS	Single	33	\$ 4.200	\$ 4.400	\$ 100	unlimited
	Double	35	\$ 2.450	\$ 2.600	\$ 100	unlimited
KAMACIOĞLU <i>(private dormitory)</i>	Single	22	\$ 2.500	\$ 2.600	-	unlimited
	Double	22	\$ 1.600	\$ 1.700	-	unlimited

## BOT Dormitories - General Info

- ☐ Each BOT Dormitory has its own rules, conditions and services. The ‘**dormitory registration contract**’ payment conditions, cancellation and refunding conditions, dates of moving in and out of the dormitory and additional services might differ from one dormitory to another. Therefore, we suggest you read the contact conditions prior to your registration.
- ☐ Most of the BOT dormitories offer different room options apart from the ones listed above.
- ☐ All dormitories have their own laundry and all rooms are equipped with a TV, WC/shower, a fridge, central or split-unit air conditioning system and a room phone.



# Map of Cyprus



























 +90 392 630 11 11  [info@emu.edu.tr](mailto:info@emu.edu.tr)  [emu.edu.tr](http://emu.edu.tr)  
 [eastern.med.univ](https://www.facebook.com/eastern.med.univ)  [emuofficial](https://www.instagram.com/emuofficial)  [emuofficial](https://twitter.com/emuofficial)

